

SECTION AA
Scale 1:100

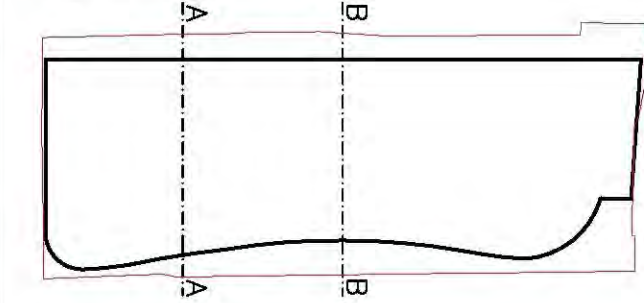
Planning

note:

Contractors are to check all levels and dimensions before work is put in hand, and any discrepancies are to be referred to the architects.

This drawing is the property of LAP Architects + Interior Designers Ltd, and must not be copied or reproduced in any way in whole or in part without the express permission of LAP Architects + Interior Designers Ltd. Copyright © LAP Architects + Interior Designers Ltd.

key



SECTION AA

| REV | DATE | DESCRIPTION | DWN | CHKD |
|-----|----------|---------------------|-----|------|
| P1 | 11-12-17 | PLANNING SUBMISSION | LW | SG |



Architects + Interior Designers Limited
123 NEW LONDON ROAD, CHELMSFORD,
ESSEX, CM2 0QT
TEL: +44 (0) 1245 269755 FAX: +44 (0) 1245 250310
E-MAIL: admin@lap-architects.co.uk
www.lap-architects.com

project
CLIFFTOWN SHORE
WESTERN ESPLANADE
SOUTHEND-ON-SEA, ESSEX, SS1 1EE



drawing title
PROPOSED SECTION AA

drawing number
8531-17

scale 1:100 @ A1

| revision | checked | date |
|----------|---------|--------------|
| P1 | SG | 8th Dec 2017 |